

PORTFOLIO INGOLSTADT

for office- & commercial space near AUDI



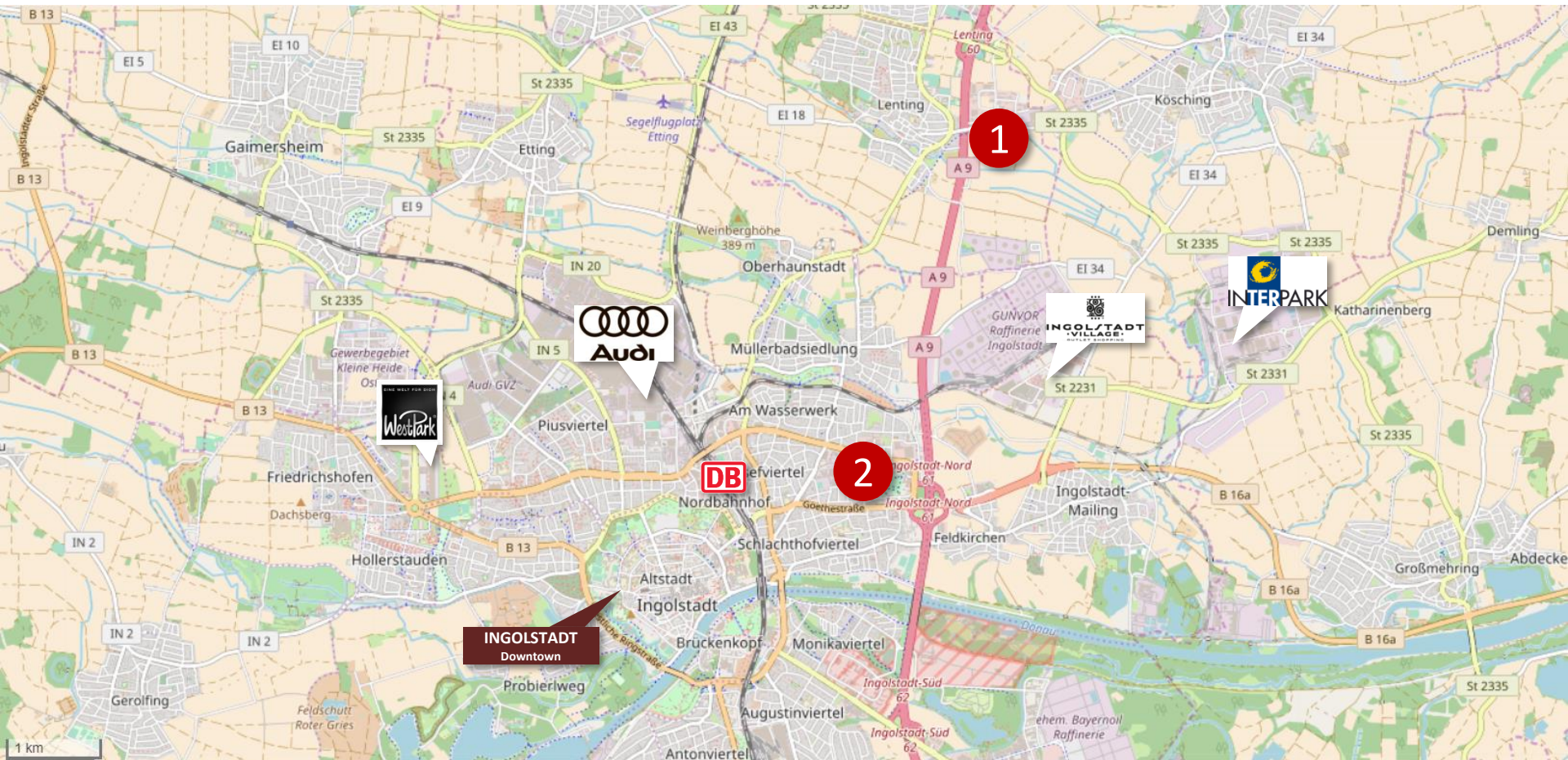
Project development: Bacher Bau GmbH & Co.KG
Friedrich-Ebert-Str. 18 ¼
D – 85055 Ingolstadt

Contact person: Mr. Hermann Bacher
h.bacher@bacher-bau.de
+49 (0)841 59030



1 BUSINESS PARK LENTING

2 DESPAG WORKSPACE



1 BUSINESS PARK LENTING



1

BUSINESS PARK LENTING



Model, TopView



Model, Perspective

BUSINESS PARK LENTING

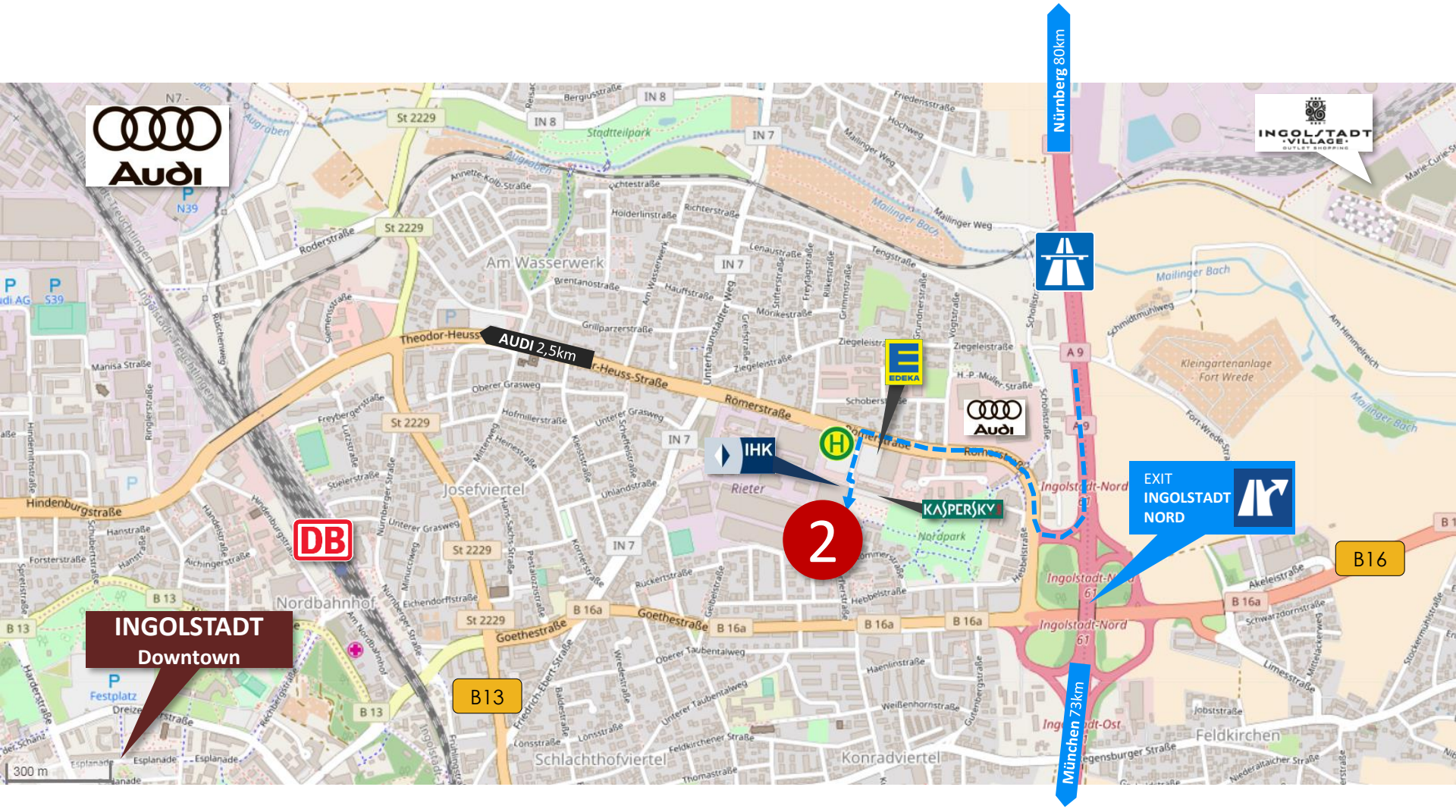
Areas with approx. 4m ceiling height in the ground floor
from approx. 150 sqm
for showrooms, retail, medical practices, hotel lobby and gastronomy

Areas from 1st floor
from approx. 50 sqm
for offices, medical practices, hotel

Construction takes place in sections up to approx. 20.000 sqm of rentable area

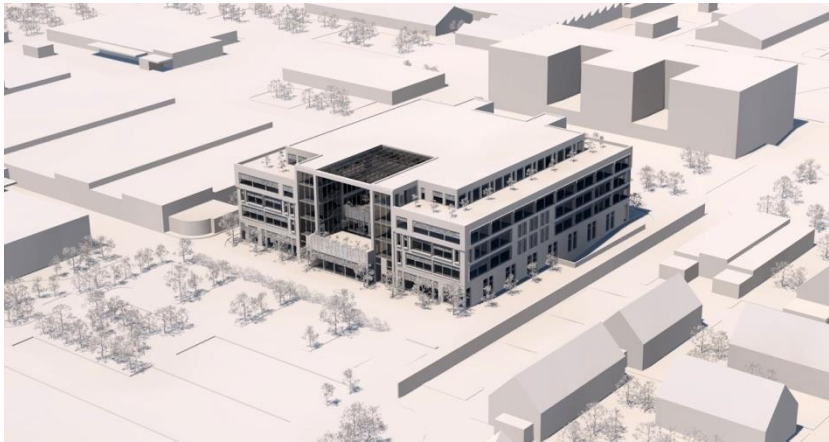
1st construction section ready for occupancy approx. 2020

2 **DESPAG WORKSPACE**



2

DESPAG WORKSPACE



Concept-Rendering



Concept-Rendering

DESPAG WORKSPACE

Areas from 2nd floor
from approx. 400 sqm
for offices, medical practices, hotel

Total of approx. 14.500 sqm of rentable area
approx. 50% already leased
(Ground + 1st floor)

Ready for occupancy from approx. 2020